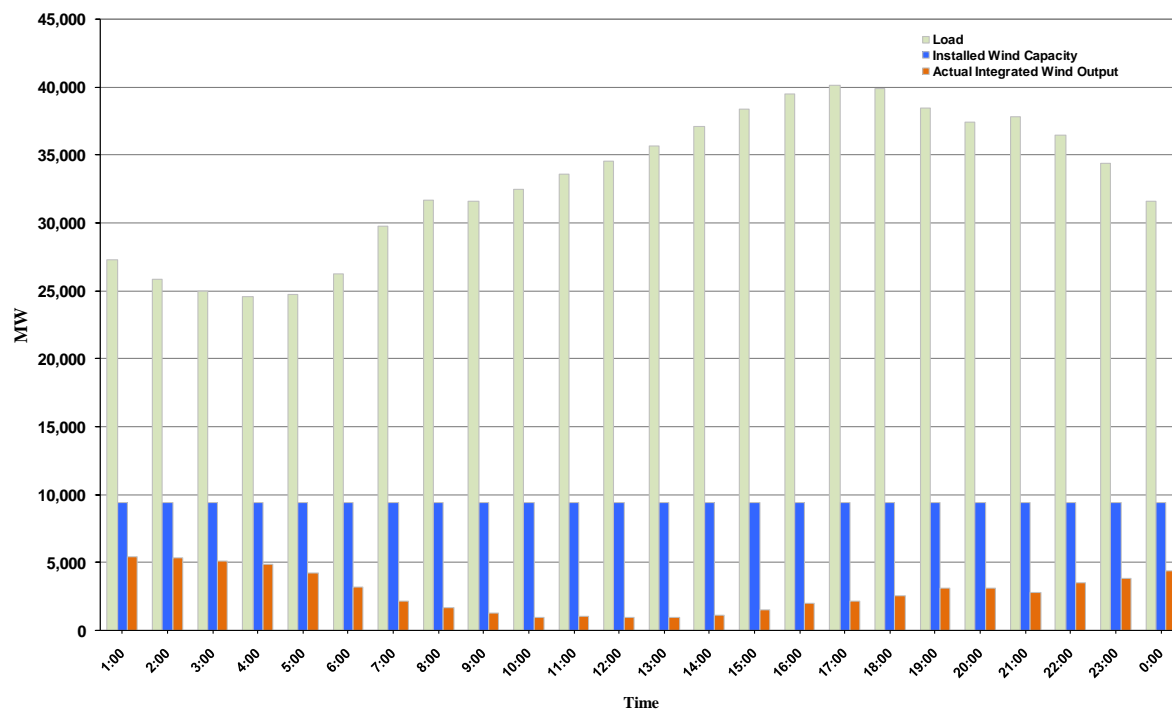




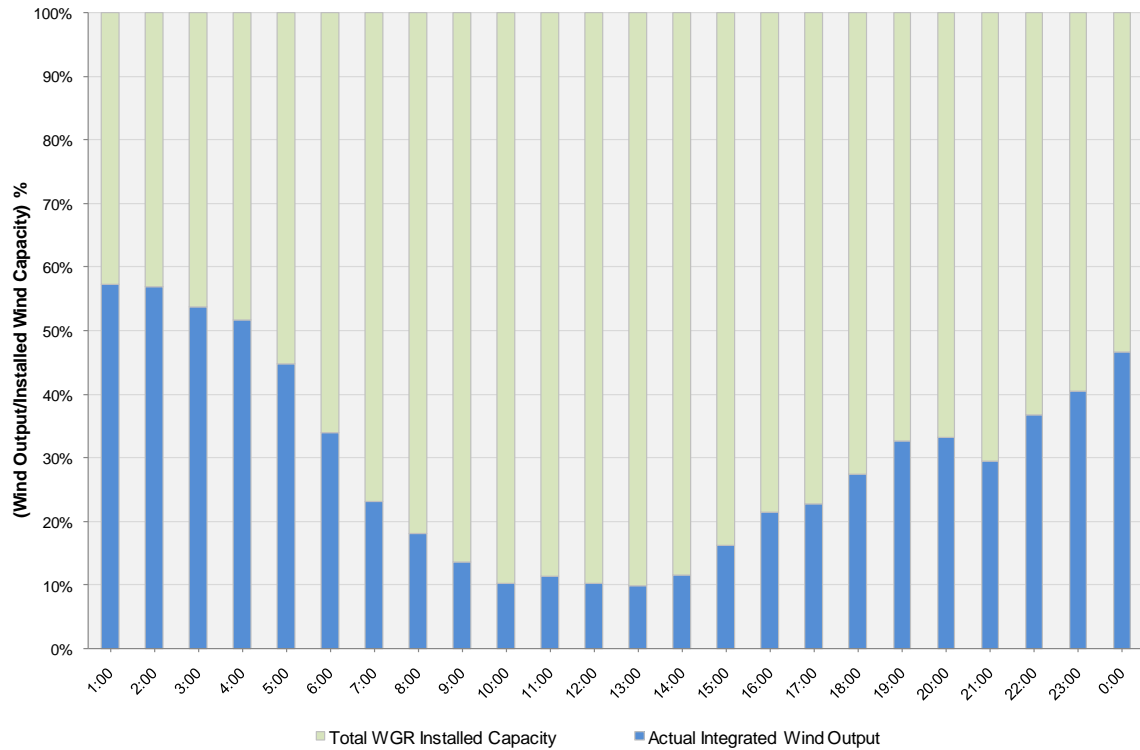
## ERCOT Grid Operations Wind Integration Report: 03/25/11

Peak Load	<b>40,143 MW</b>
Load Peak Hour	<b>17</b>
Wind Record 12/11/10	<b>7,227 MW</b>
Max Wind Value	<b>5,480 MW</b>
Wind Peak Time	<b>00:00:04</b>
Wind Integration %	<b>19.31%</b>

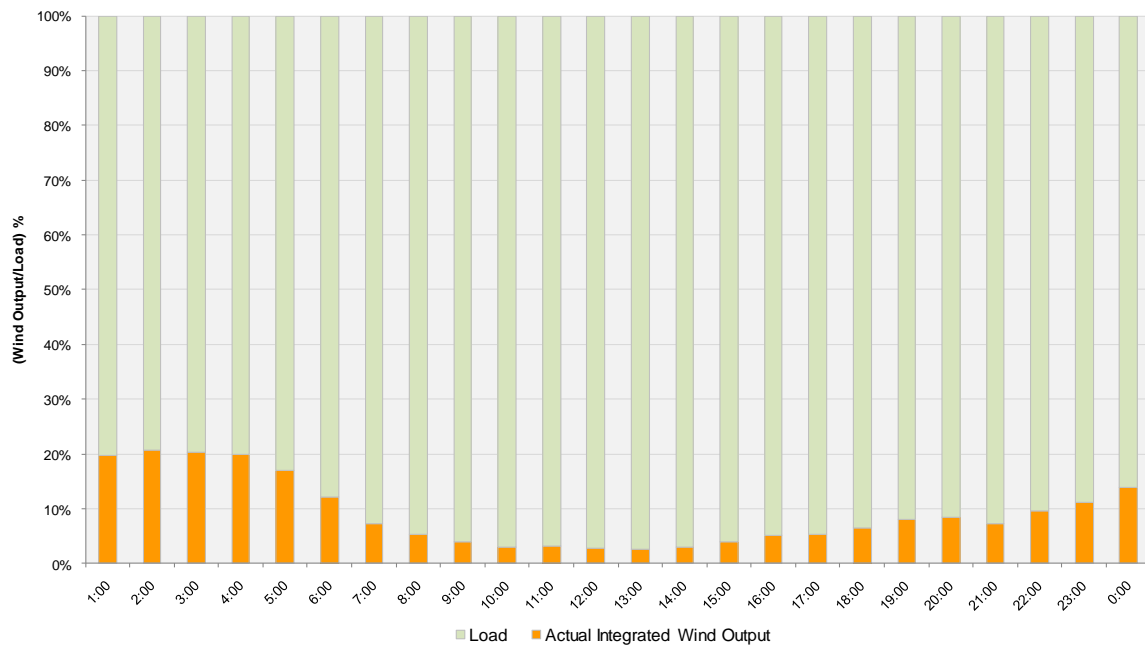
Hourly Average Actual Load vs. Actual Wind Output  
03-25-2011



**Actual Wind Output as a Percentage of the Total Installed Wind Capacity**  
**03-25-2011**



**Actual Wind Output as a Percentage of the ERCOT Load**  
**03-25-2011**



ERCOT Load vs. Actual Wind Output 3/18/2011 - 3/25/2011

